

Clarinette 2

LA FLÛTE ENCHANTÉE

Quelques extraits pour orchestre

Adaptation : Olivier MIQUEL

Wolfgang A. MOZART

Andante



116

mf *f* *f*

127

pp **Andante**

137

pp

148

157

166

173

183

188

p *fp* *fp* **Allegro**

197

205



213



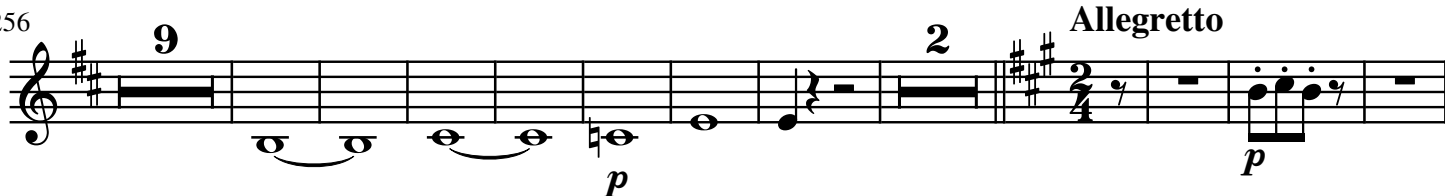
221



231



256



278



290



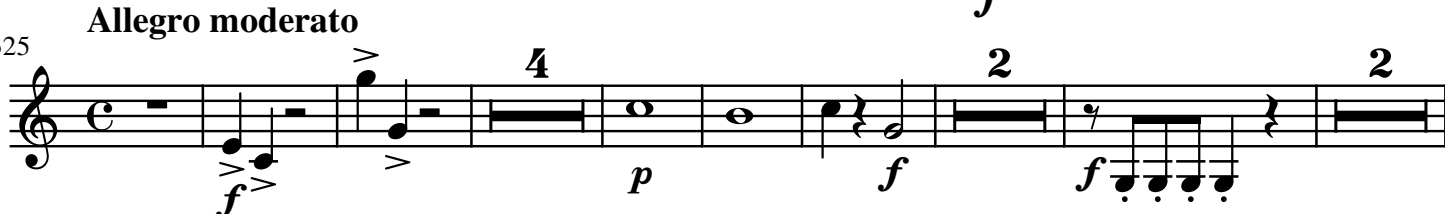
301



317



325



340

5

p

f

This musical staff contains measures 340 through 348. It begins with a piano (*p*) dynamic, featuring a half note followed by a whole note. A five-measure rest is indicated by a horizontal line with the number '5' above it. The staff then continues with a series of eighth and sixteenth notes, marked with a forte (*f*) dynamic.

349

3

This musical staff contains measures 349 through 354. It starts with a quarter note, followed by a quarter rest, and then a series of eighth and sixteenth notes. A triplet of eighth notes is marked with a '3' above it. The staff concludes with a three-measure rest, indicated by a horizontal line with the number '3' above it.

355

f

f

This musical staff contains measures 355 through 362. It begins with a half note, followed by a half note with a slur, and then a series of quarter and eighth notes. A forte (*f*) dynamic is marked. The staff ends with a quarter note and a half note, both marked with a forte (*f*) dynamic and an accent (>).

363

f

This musical staff contains measures 363 through 369. It begins with a quarter note and a half note, both marked with an accent (>). The staff continues with a series of eighth and sixteenth notes, marked with a forte (*f*) dynamic. The staff concludes with a quarter note and a half note, both marked with an accent (>).